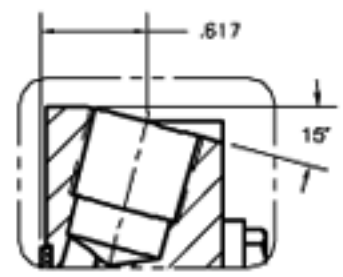
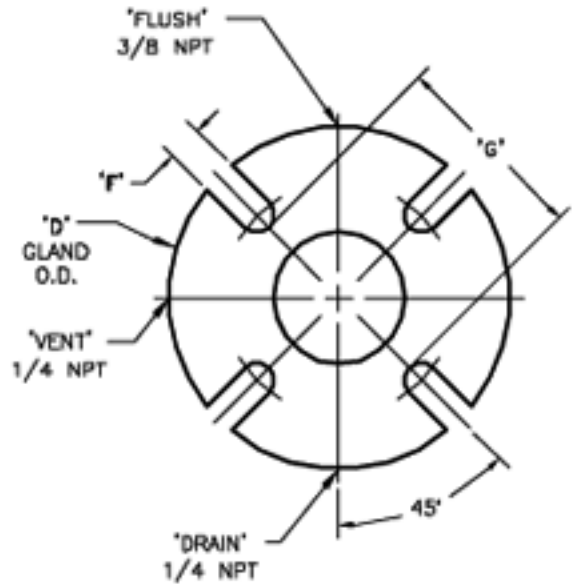


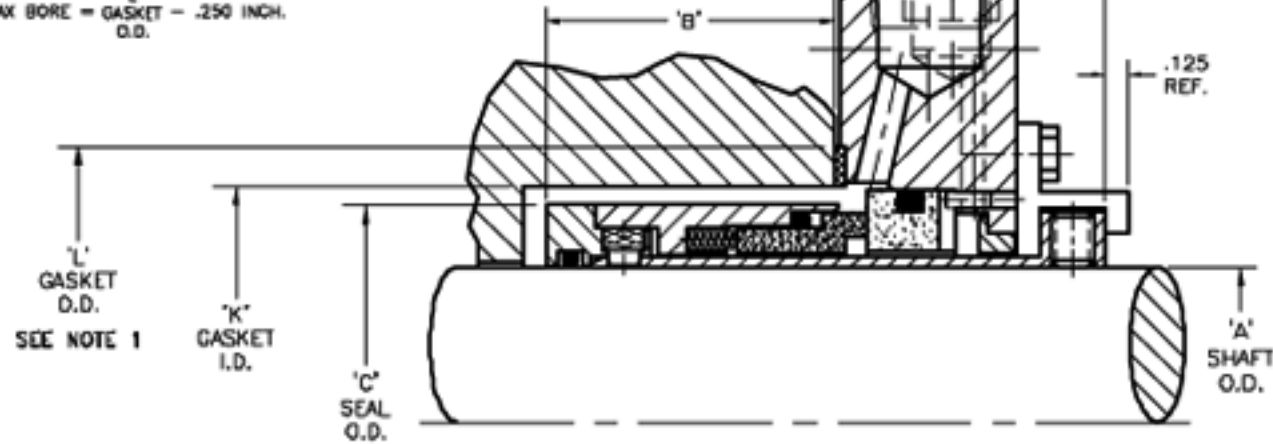
SIZE	A	B	C	D	E	F	G	H	J	GASKET	
										K	L
-18	1.000	1.633	1.700	4.000	1.531	.437	2.375	.531	.657	1.790	2.230
-18	1.125	1.633	1.700	4.250	1.531	.437	2.462	.531	.657	1.915	2.355
-20	1.250	1.633	1.950	4.250	1.531	.437	2.583	.531	.657	2.040	2.480
-22	1.375	1.833	1.950	4.250	1.531	.437	2.712	.617	.688	2.165	2.605
-24	1.500	1.833	2.200	4.500	1.531	.562	2.950	.531	.657	2.415	2.855
-28	1.625	1.833	2.325	5.000	1.531	.562	3.075	.531	.657	2.540	2.990
-28	1.750	1.833	2.450	5.500	1.531	.562	3.188	.531	.657	2.665	3.105
-30	1.875	1.833	2.575	5.500	1.531	.562	3.313	.531	.657	2.790	3.230
-32	2.000	1.582	2.700	5.500	1.594	.562	3.570	.562	.719	3.040	3.490
-34	2.125	1.582	2.825	6.000	1.594	.687	3.687	.500	.719	3.165	3.605
-38	2.250	1.538	2.950	6.250	1.656	.687	3.813	.593	.782	3.290	3.730
-38	2.375	1.714	3.195	6.250	1.656	.687	3.937	.531	.782	3.415	3.855
-40	2.500	1.650	3.320	6.500	1.720	.687	3.937	.500	.845	3.500	3.855
-42	2.625	1.650	3.560	6.500	1.720	.687	4.188	.500	.845	3.625	4.070
-44	2.750	1.589	3.650	7.500	1.781	.687	4.438	.500	.907	3.820	4.320
-46	2.875	1.712	3.785	7.500	1.781	.687	4.625	.656	.907	3.950	4.450
-48	3.000	1.822	3.900	8.000	1.781	.687	5.062	.656	.907	4.075	4.700
-50	3.125	1.970	4.050	8.000	1.781	.687	5.062	.656	.907	4.200	4.825
-52	3.250	1.922	4.175	8.250	1.781	.687	5.187	.656	.907	4.325	4.950
-54	3.375	1.970	4.300	8.500	1.781	.812	5.312	.656	.907	4.450	5.075
-58	3.500	1.860	4.430	8.500	1.843	.812	5.438	.687	.989	4.575	5.200
-58	3.625	1.908	4.555	8.500	1.843	.812	5.562	.687	.989	4.700	5.325
-60	3.750	1.860	4.680	8.750	1.843	.812	5.688	.687	.989	4.825	5.450
-62	3.875	1.908	4.900	8.750	1.843	.812	5.812	.687	.989	4.950	5.575
-64	4.000	1.750	5.150	9.000	1.843	.812	6.063	.687	.989	5.325	5.850



1 3/8" FLUSH LOCATION ONLY



NOTE:  
1. MAX BORE = GASKET - .250 INCH. O.D.



www.raisamex™.mx

NOTE: RS3 DESIGN IS SHOWN HERE. THE RS1 SEAL IS SIMILAR, BUT DOES NOT INCLUDE THE VENT & DRAIN CONNECTIONS OR THROTTLE BUSHING.



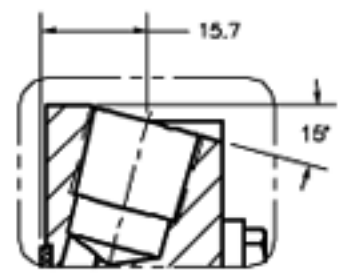
P.O. BOX 188 / 1 JACKSON ST.  
ESSEX JUNCTION, VT 05453  
(802) 878-8307

STYLE RS1/RS3 ROTATING  
MULTI-SPRING CARTRIDGE SEAL

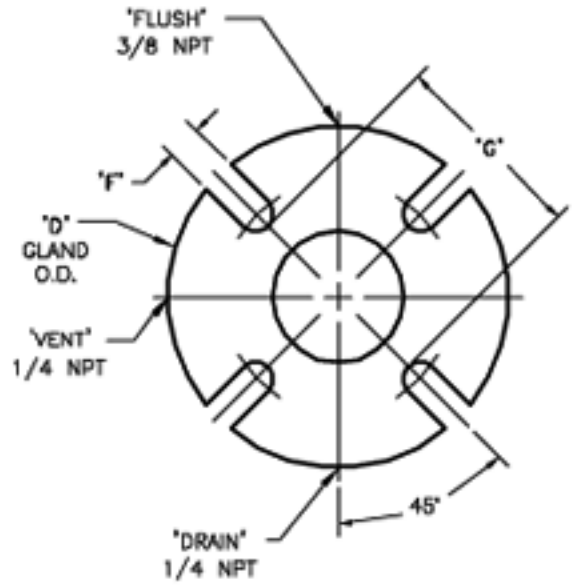
DWG.#: SK1859

REV.

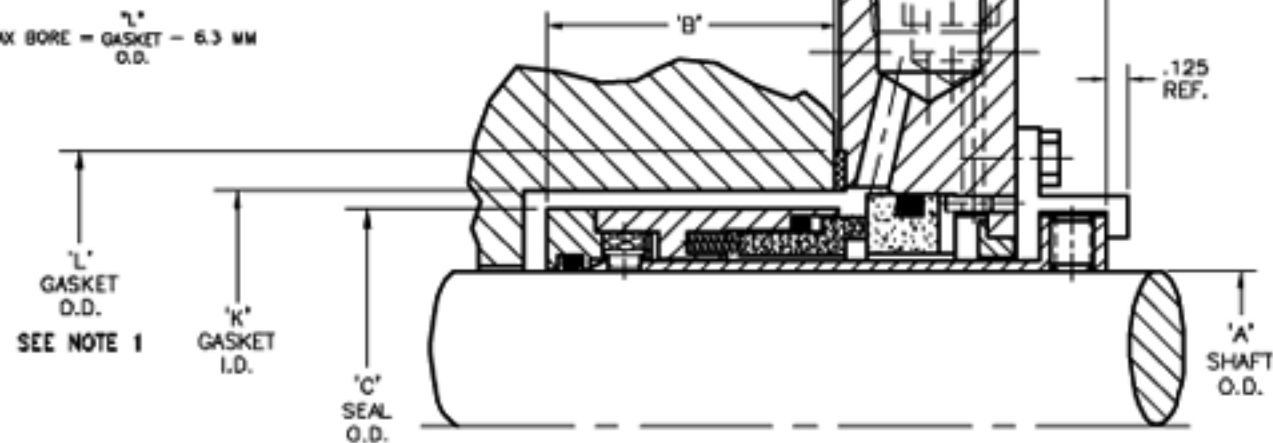
SIZE	REF.	GASKET										
		A	B	C	D	E	F	G	H	J	K	L
24mm	-18	24.0	41.5	43.2	101.6	38.9	15.1	60.3	13.5	16.7	45.5	58.6
25mm	-16	25.0	41.5	43.2	101.6	38.9	15.1	60.3	13.5	16.7	45.5	56.6
28mm	-18	28.0	41.5	43.2	108	38.9	15.1	62.5	13.5	16.7	48.6	58.6
30mm	-20	30.0	41.5	49.5	108	38.9	15.1	65.6	13.5	16.7	51.8	63.8
32mm	-20	32.0	41.5	49.5	108	38.9	15.1	65.6	13.5	16.7	51.8	63.8
33mm	-22	33.0	41.5	49.5	108	38.9	15.1	68.9	15.7	16.7	55.0	66.2
35mm	-22	35.0	41.5	49.5	108	38.9	15.1	68.9	15.7	16.7	55.0	66.2
38mm	-24	38.0	41.5	55.9	114.3	38.9	14.3	74.6	13.5	16.7	61.3	72.5
40mm	-28	40.0	41.5	59.0	127	38.9	14.3	78.1	13.5	16.7	64.5	75.9
43mm	-28	43.0	41.5	62.2	136.7	38.9	14.3	81.0	13.5	16.7	67.7	78.8
45mm	-28	45.0	41.5	62.2	136.7	38.9	14.3	81.0	13.5	16.7	67.7	78.8
48mm	-30	48.0	41.5	65.4	136.7	38.9	14.3	84.1	13.5	16.7	70.8	82.0
50mm	-32	50.0	40.2	68.8	136.7	40.5	14.3	90.7	14.3	18.3	77.2	86.6
53mm	-34	53.0	40.2	71.7	132.4	40.5	17.4	83.6	12.7	16.3	80.4	91.6
56mm	-36	55.0	39.1	74.9	136.8	42.1	17.4	86.8	15.1	19.9	83.6	94.7
58mm	-38	58.0	43.5	81.2	136.8	42.1	17.4	100	13.5	16.7	86.7	97.8
60mm	-38	60.0	43.5	81.2	136.8	42.1	17.4	100	13.5	16.7	86.7	97.8
63mm	-40	63.0	42.0	84.3	165.1	43.7	17.4	100	12.7	21.5	89.9	98.0
65mm	-42	65.0	42.0	90.4	165.1	43.7	17.4	106.4	12.7	21.5	92.1	103.4
68mm	-44	68.0	40.4	92.7	190.5	45.2	17.4	112.7	12.7	23.0	97.0	109.7
70mm	-44	70.0	40.4	92.7	190.5	45.2	17.4	112.7	12.7	23.0	97.0	109.7
72mm	-48	72.0	43.5	95.1	190.5	45.2	17.4	117.5	16.7	23.0	103.3	113.0
75mm	-48	75.0	48.3	99.1	203.2	45.2	17.4	128.8	16.7	23.0	103.5	119.4
80mm	-52	80.0	50.0	106.0	209.5	45.2	17.4	131.8	16.7	23.0	108.0	125.7
85mm	-54	85.0	50.0	109.2	218.0	45.2	20.6	134.9	16.7	23.0	113.0	128.9
90mm	-58	90.0	48.5	115.7	218.0	46.8	20.6	141.3	17.4	24.8	119.4	136.3
95mm	-60	95.0	47.2	118.9	222.3	46.8	20.6	144.5	17.4	24.8	122.6	138.4
100mm	-64	100.0	44.5	130.8	228.6	46.8	20.6	154.0	17.4	24.8	135.3	151.1



33mm & 35mm  
FLUSH LOCATION ONLY

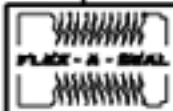


NOTE:  
1. MAX BORE = GASKET - 6.3 MM O.D.



www.raisamex™.mx

NOTE: RS3 DESIGN IS SHOWN HERE. THE RS1 SEAL IS SIMILAR, BUT DOES NOT INCLUDE THE VENT & DRAIN CONNECTIONS OR THROTTLE BUSHING.



P.O. BOX 184 / 1 JACKSON ST.  
ESSEX JUNCTION, VT 05413  
802-878-8307

METRIC STYLE RS1/RS3 ROTATING  
MULTI-SPRING CARTRIDGE SEAL

DWG.#: SK1860

REV.